

# XTNDConnect™ PC

**Extended Systems®**  
Beyond Connected™

## Mobile Synchronization and Management Software

### XTNDConnect PC Makes Data Synchronization Easy

XTNDConnect PC is a software application that allows you to synchronize your contacts, calendars, tasks and e-mail between your mobile devices and popular PC applications. XTNDConnect PC is different from other synchronization solutions because it is fast, flexible, and easy to use.

### One Solution that Works with Major Devices and Applications

Now, corporations and individual users only need to purchase one synchronization application to support Windows CE, Palm Computing, CASIO Personal Organizer computing devices and the Ericsson R320s mobile phone. With XTNDConnect PC, selecting between devices is as easy as selecting a printer. The same application will also let you synchronize your devices with Microsoft Outlook, Lotus Notes, Lotus Organizer, ACT! and other popular PC applications.

### Fast Synchronization

XTNDConnect PC uses Rapid Transfer Technology™ to provide synchronization that is at least two times faster than other competing products in the market. After the initial synchronization, XTNDConnect PC synchronizes only your changes, so you save time.

### Flexibility for Your Changing Environment

XTNDConnect PC has built-in flexibility that allows you to synchronize a variety of ways. You can synchronize multiple mobile devices to a single PC application and synchronize a single mobile device to multiple computers. You can also transfer data from one PC application to another and keep two applications in sync. The flexibility of XTNDConnect PC makes it the solution for every environment.

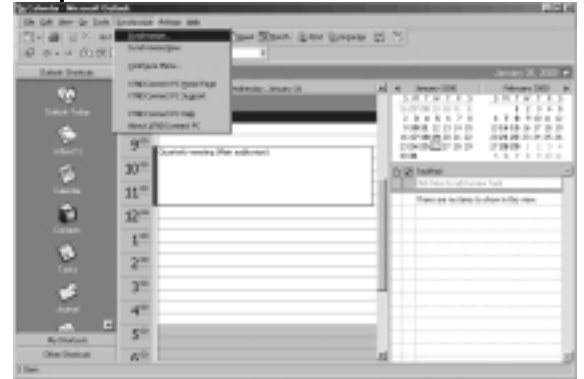
### Easy to Use Menu

XTNDConnect PC embeds a synchronization menu inside your PC application. You no longer need to start a separate application to synchronize; you simply click on the synchronization menu. For Lotus Notes and ACT! users, synchronization is initiated from a tray icon. In addition, XTNDConnect PC supports the auto-detect feature that enables you to synchronize automatically when you connect your mobile device to your PC.

### E-mail Manager

XTNDConnect PC not only synchronizes e-mail, but it also manages whether e-mail has been read or not. Now, e-mail that has been read on the mobile device automatically appears as read on your PC once synchronization is complete.

### Easy to Use Synchronization Menu



### New User Interface



**XTNDConnect PC is different from other synchronization solutions because it's fast, flexible and easy to use.**

**Data Sheet**

[www.extendedsystems.com](http://www.extendedsystems.com)

# XTNDConnect PC Specifications



Visit our Web site at [www.extendedsystems.com](http://www.extendedsystems.com) for the latest product specifications, including device and application support information.

## Platform/System Requirements

- Windows 95/98/NT 4.0/2000
- IBM PC compatible computer 386 or above (Pentium recommended)
- 16MB RAM (32 MB Recommended)
- 10MB Free Hard Disk space
- Mobile device and appropriate connectivity device

## PC Applications Supported

- Microsoft Outlook 97/98/2000
- Lotus Notes 4.5/4.6/R5
- Lotus Organizer 97-GS/4.1/5.0/6.0
- ACT! 3.05/4.0/2000
- NetManage Ecco Pro 4.0
- GoldMine 3.0/4.0 (Standard Edition)

## Mobile Devices Supported

### (software required to use device)

- Windows CE Palm-size, Pocket and Handheld PC devices (Windows CE Services/ActiveSync)
- Palm Computing platform devices (Palm Desktop Version 3.0 and above)
- CASIO Personal Organizers
- Ericsson R320s mobile phone

## XTNDConnect PC is capable of synchronizing:

- Contacts/Addresses
- Calendars/Appointments
- Tasks/To-Do's
- E-mail

## Transfer Modes

- Synchronization
- Import
- Export

## Data Filtering Capability

- Record filters
- Date filters
- Text filters
- E-mail filters based on number of days and e-mail size

## Profiles

Multiple devices can be associated with multiple applications via a profile. This is available for synchronization only. Import and export do not allow for profiles.

PC applications may be associated with any number of devices. The mobile devices are limited to connect to them as follows:

- Windows CE: Supports up to 5 profiles
- Palm Computing: Supports up to 5 profiles
- CASIO Personal Organizer: Supports 1 profile

## Error and Conflict Handling

- Displays all errors and warnings before making changes
- Customizable conflict resolution (manual and automatic)
- Auto error recovery features

## Support & Maintenance

- Free 30-day phone support
- Free web and e-mail support
- Built-in logging capability

## International Versions Available (CD Only)

- English
- Danish
- Dutch
- Finnish
- French
- German
- Italian
- Norwegian
- Portuguese
- Spanish
- Swedish

**30-Day Trial Version Available at:**

[www.extendedsystems.com/go/xtndconnectpc](http://www.extendedsystems.com/go/xtndconnectpc)

## Extended Systems

Corporate Office  
5777 N. Meeker Ave.  
Boise, ID 83713

## Customer Service Center

800-235-7576  
208-322-7800  
Fax: 406-587-9170

## For more information

E-mail: [info@extendsys.com](mailto:info@extendsys.com)  
Web: [www.extendedsystems.com](http://www.extendedsystems.com)

# 800-235-7576

Extended Systems, a leader in mobile information management, offers hardware and software solutions that enable mobile users to access, synchronize, collect, print and retrieve information on demand. Products include: data synchronization software, short-range wireless connectivity products (IrDA and Bluetooth), virtual private network (VPN) remote access servers, Internet access solutions, a complete line of network print servers and client/server database management systems with remote access capabilities.

All trademarks and registered trademarks are the properties of their respective companies.  
Information subject to change without notice.  
9710-0660-0003