

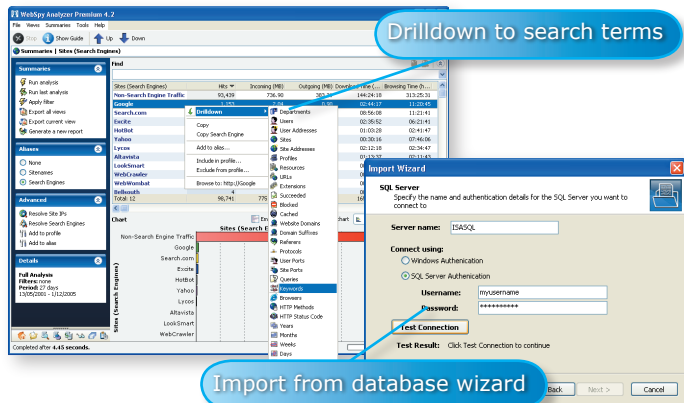


ANALYZER PREMIUM 4.2

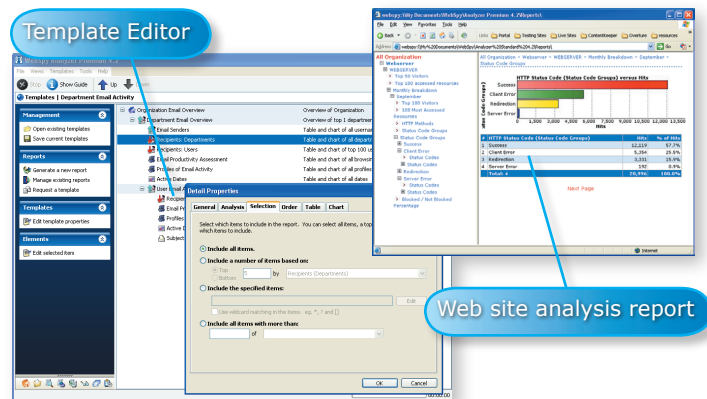
WebSpy has released the next version of its flagship reporting package Analyzer Premium.

What's New in 4.2

- **Faster Word Reports**
Analyzer Premium now utilizes Word ML to generate reports for Microsoft® Word much faster.
- **Database Import Wizard**
It is now easier to import data from a database such as ISA server logs from SQL server using the new Database Import Wizard.
- **Page Views**
Drilldown from any User to 'Page Views' to see the list of Web pages they viewed and the order in which they viewed them.
- **Import Users and Departments from Active Directory**
Use Active Directory to automatically import user's email addresses and computer names into the Usernames Alias, and Windows Groups into the Departments Alias.



- **Group Selection when Importing Departments as a task**
When importing user names and departments from a directory service as a scheduled task, you can configure the task to only import certain departments.
- **Easy Report Template editing**
Use the Templates View to easily edit any one of WebSpy's pre-defined report templates.
- **New Report Templates**
Analyze hits to your web site using the new 'Website Analysis' and 'Website Referrer Analysis' report templates. Get greater visibility into your Internet usage with the new 'Users, Sites and Resources' Template.



- **New Profiles**
In addition to the comprehensive range of existing WebSpy profiles, URLs can now be categorized into Sport, Web Mail, Piracy, Spyware & Adware, and Automated Traffic and Tickers.
- **Search Engines Alias**
Get a better idea on what your users are searching for on the Internet using the new 'Search Engines' alias. This alias groups your Internet browsing by the major search engines and drilling down to the Keywords or Queries summaries will display the search terms used.
- **Range of HTML Report Styles**
Choose from a range of HTML style sheets to change the look and feel of your HTML reports.
- **Configurable report cover page text**
Add customized text to the cover page of each report.
- **Improved User Interface**
Sidebar navigation is now possible from within the task pad column saving screen real estate. New images and icons improve the usability experience.

- **Quick Start Tutorial**
Get started with Analyzer Premium faster using the Quick Start Tutorial. Simply select Help | Quick Start Tutorial from the main menu. This tutorial includes links to online video demonstrations to view how each step is performed.

Minimum Requirements

- Microsoft Windows 98, NT4, ME, 2000, XP, & 2003 Server
- Internet Explorer 5.0
- Pentium PIII-500 MHz or faster
- 256 MB RAM
- HDD 10 MB + 10% of logs imported
- Installation on Windows 98, Windows ME and Windows NT4 also requires the Directory Service Client (DSClient). This is free to download from the Microsoft Website.

Download your free 30 day, fully functional trial at:
www.webspy.com